

# Temperature Protection unit - MTP 6



## ◆ Description ◆

MTP6 shows value of 6 inputs signal [7] on LCD display [1] and warns when the input signal is over set-points. The warning is given by appropriate LED [2] indication and by two output relays [6] (for external horn).

Model MTP 3N includes 3 inputs and one output relay. Model MTP 3R includes 3 inputs and two output relays (for alarm and stop).

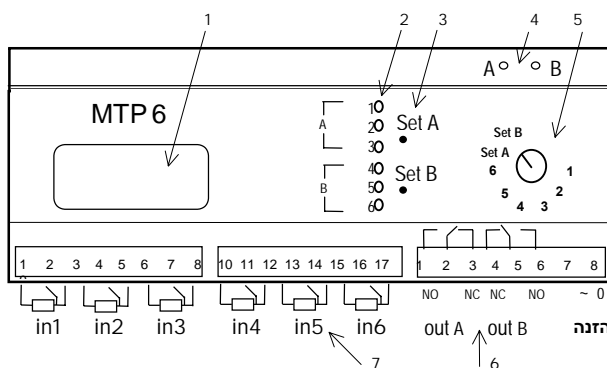
## ◆ Calibration ◆

The device is calibrated according to customer requirements.

☆ Set points can be adjusted by potentiometers Set A and Set B [3] located on the front panel. Selector switch [5] enables to display inputs/set-points value.

☆ The delay of relays activation can be adjusted in range 0-10 sec by potentiometers A and B [4] located on the box side.

## ◆ Connection ◆



MTP6-P-1-8-E

## ◆ Features ◆

- 6 inputs PT100 or 4-20mA or 0-10VDC
- Accuracy  $\pm 0.1\%$  F.S.
- Display : 3.5digits LCD size 0.5", 6 LEDs
- Potentiometers for setting set-points
- 2 output relays
- 3 years warranty

## ◆ Specifications ◆

Accuracy:  $\pm 0.1\%$  F.S.

Power supply: 110 /220 $\pm 20\%$ VAC or 24V AC/DC

Input: 6 PT100 temp. sensors (3 wire).  
Option: 4-20mA / 0-10V (according to order)

Output: 2 c/o contact 220V /5A. The relays are activated after 10 sec delay. Operation mode of relay - FSH (relay A) and FSL (relay B).

Ambient Temp.: -20  $\div$  +50  $^{\circ}$ C

Temperature stability:

0.05% at changes @10 $^{\circ}$ C in ambient temp.

Display: 3.5 digits (0-199.9) LCD size 0.5".

6 red LED indicating input- above set point.

Enclosure: W90 X L160 X H73 mm plastic case

Connection: plug-in terminals on box side

Mounting: 35mm DIN - rail

Protection category: IP-40.

## ◆ Installation ◆

\* The PT-100 connections to the MTP should be by shielded cable. It is recommended to join all shields together by a connector and to ground them. Don't ground the second side of shields.

\* It is necessary to install resistors 100 $\Omega$  1/4W to inputs without PT-100 (for instance, 4,5) and to connect two other pins (5,6).

**megatron** electronics & controls ltd

Manufactures & Representatives for Control Equipment



**מגטרון** אלקטרוניקה ובקרה בע"מ

יצרנים ומפיצים של ציוד מכשור בקרה והתרעה

Web site : <http://www.megatron.co.il>

טל. 04-8410704, פקס. 04-8410705, רח' מרקוני 12, תד. 1719, חיפה 31016